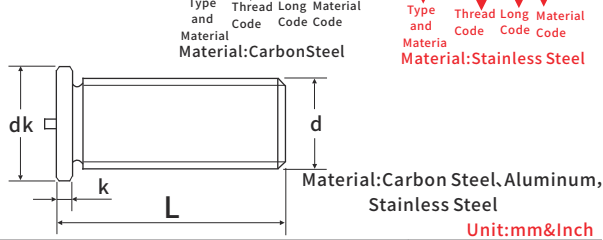


# JX HARDWARE FASTENERS SCREWS SERIES

## Stud Welding With Tip Ignition - Threaded Stud - Type PT



Standard:YJT-1038-2012



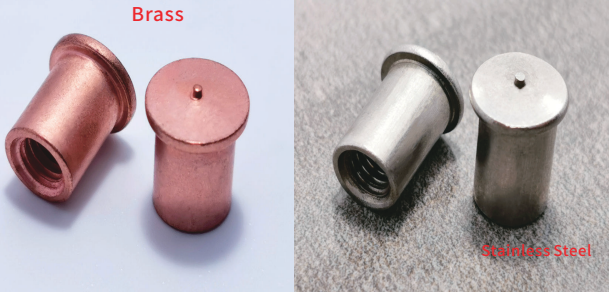
Part Number Designation  
JX-WD- M3- 6- ST  
Material:CarbonSteel

Part Number Designation  
JX-WD- M3- 6- SS  
Material:Stainless Steel

Size d	Thread Code	P/N			L Long Code mm	dk		K	
		Carbon Steel	Stainless steel	Aluminum		Max	Min	Max	Min
M3	0.5	JX-WD-M3-L-ST	JX-WD-M3-L-SS	JX-WD-M3-L-AI	5 6 8 10 12 14 15 20	4.8	4.2	1.1	0.7
M4	0.7	JX-WD-M4-L-ST	JX-WD-M4-L-SS	JX-WD-M4-L-AI	5 6 8 10 12 14 15 20	5.8	5.2	1.1	0.7
M5	0.8	JX-WD-M5-L-ST	JX-WD-M5-L-SS	JX-WD-M5-L-AI	8 10 12 14 15 20 25 30	6.8	6.2	1.2	0.8
M6	1.0	JX-WD-M6-L-ST	JX-WD-M6-L-SS	JX-WD-M6-L-AI	8 10 12 14 15 20 25 30	7.8	7.2	1.2	0.8
M8	1.25	JX-WD-M8-L-ST	JX-WD-M8-L-SS	JX-WD-M8-L-AI	10 12 14 15 20 25 30 35	9.8	9.2	1.3	0.9
M10	1.5	JX-WD-M10-L-ST	JX-WD-M10-L-SS	JX-WD-M10-L-AI	10 12 14 15 20 25 30 35	11.8	11.2	1.3	0.9
M12	1.75	JX-WD-M12-L-ST	JX-WD-M12-L-SS	JX-WD-M12-L-AI	10 12 14 15 20 25 30 35	13.8	13.2	1.3	0.9
#6-32	32	JX-WD-M632-L-ST	JX-WD-M632-L-SS	JX-WD-M632-L-AI	5 6 8 10 12 14 15 20	0.189	0.165	0.043	0.027
#8-32	32	JX-WD-M832-L-ST	JX-WD-M832-L-SS	JX-WD-M832-L-AI	5 6 8 10 12 14 15 20	0.227	0.203	0.043	0.027
#10-24	24	JX-WD-M024-L-ST	JX-WD-M024-L-SS	JX-WD-M024-L-AI	8 10 12 14 15 20 25 30	0.268	0.244	0.047	0.031
1/4-20	20	JX-WD-M0420-L-ST	JX-WD-M0420-L-SS	JX-WD-M0420-L-AI	8 10 12 14 15 20 25 30	0.307	0.283	0.047	0.031
5/16-18	18	JX-WD-M0518-L-ST	JX-WD-M0518-L-SS	JX-WD-M0518-L-AI	10 12 14 15 20 25 30 35	0.386	0.362	0.051	0.035
3/8-16	16	JX-WD-M0616-L-ST	JX-WD-M0616-L-SS	JX-WD-M0616-L-AI	10 12 14 15 20 25 30 35	0.465	0.442	0.051	0.035
1/2-13	13	JX-WD-M0813-L-ST	JX-WD-M0813-L-SS	JX-WD-M0813-L-AI	10 12 14 15 20 25 30 35	0.543	0.519	0.051	0.035

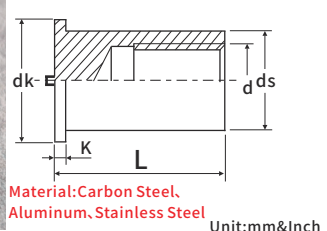
Unit:mm&Inch

## Weld Standoffs



Part Number Designation  
JX-WDS- M3- 8- ST  
Material:Carbon Steel

Part Number Designation  
JX-WDS- M3- 8- SS  
Material:Stainless Steel

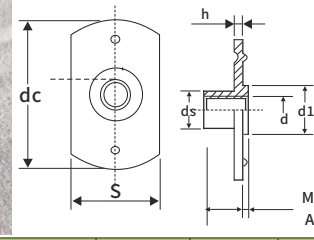


Size d	Thread Code	P/N			L Long Code mm	ds		dk		k	
		Carbon Steel	Stainless steel	Aluminum		Max	Min	Max	Min	Max	Min
M3	0.5	JX-WDS-M3-L-ST	JX-WDS-M3-L-SS	JX-WDS-M3-L-AI	8 10 12 15 18 20 25	5.5	4.5	6.8	6.2	1.2	0.8
M4	0.7	JX-WDS-M4-L-ST	JX-WDS-M4-L-SS	JX-WDS-M4-L-AI	8 10 12 15 18 20 25	6.5	5.5	7.8	7.2	1.2	0.8
M5	0.8	JX-WDS-M5-L-ST	JX-WDS-M5-L-SS	JX-WDS-M5-L-AI	8 10 12 15 18 20 25	7.5	6.5	8.8	8.2	1.2	0.8
M6	1.0	JX-WDS-M6-L-ST	JX-WDS-M6-L-SS	JX-WDS-M6-L-AI	8 10 12 15 18 20 25	8.5	7.5	9.8	9.2	1.2	0.8
#6-32	32	JX-WDS-632-L-ST	JX-WDS-632-L-SS	JX-WDS-632-L-AI	8 10 12 15 18 20 25	0.217	0.177	0.268	0.244	0.043	0.027
#8-32	32	JX-WDS-832-L-ST	JX-WDS-832-L-SS	JX-WDS-832-L-AI	8 10 12 15 18 20 25	0.256	0.216	0.307	0.283	0.043	0.027
#10-24	24	JX-WDS-024-L-ST	JX-WDS-024-L-SS	JX-WDS-024-L-AI	8 10 12 15 18 20 25	0.296	0.256	0.347	0.323	0.043	0.027
1/4-20	20	JX-WDS-0420-L-ST	JX-WDS-0420-L-SS	JX-WDS-0420-L-AI	8 10 12 15 18 20 25	0.335	0.295	0.386	0.362	0.043	0.027

Unit:mm&Inch

# JX HARDWARE FASTENERS SCREWS SERIES

## T-Style Weld Nuts - Type 1A and 1B



Grade:5.8,8.8,10.9,12.9  
Standard:JIS B 1196-2010

Part Number Designation  
JX-TWDN- M4- ST  
Material:Carbon Steel

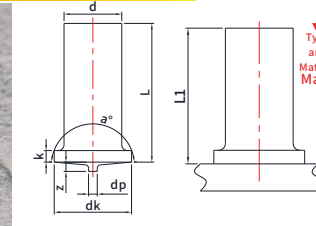
Part Number Designation  
JX-TWDN- M4- SS  
Material:Stainless Steel

Size d	Thread Code	P/N		dc		s		ds		H		h		k	
		Carbon Steel	Stainless steel	Nom	Tol	Nom	Tol	Nom	Tol	Nom	Tol	Nom	Tol	Nom	Tol
M4	0.7	JX-TWDN-M4-ST	JX-TWDN-M4-SS	20	+0.5	12	±0.25	5.4	+0.5	5.5	±0.4	1.2	±0.2	0.8	-0.2 0
M5	0.8	JX-TWDN-M5-ST	JX-TWDN-M5-SS	20	+0.5	12	±0.25	6.2	+0.5	6.5	±0.4	1.2	±0.2	0.8	
M6	1.0	JX-TWDN-M6-ST	JX-TWDN-M6-SS	23	+0.7	14	±0.3	7.8	+0.5	7.0	±0.5	1.6	+0.25	0.8	
M8	1.0/1.25	JX-TWDN-M8-ST	JX-TWDN-M8-SS	23	+0.7	14	±0.3	9.5	+0.7	8.5	±0.5	1.6	+0.25	0.8	
M10	1.5/1.25	JX-TWDN-M10-ST	JX-TWDN-M10-SS	30	±1	19	±0.4	12.5	+0.7	10	±0.6	2.0	+0.3	1.2	
M12	1.25/1.75	JX-TWDN-M12-ST	JX-TWDN-M12-SS	32	+1.2	21	±0.5	14.5	+0.7	11	±0.8	2.0	+0.3	1.2	

Material:Carbon Steel,  
Aluminum,Stainless

Unit:mm

## JX-ISO 13918(UT)-2017 UT welding standoffs



Part Number Designation  
JX-ISO13918- 3- SS  
Material:Stainless Steel

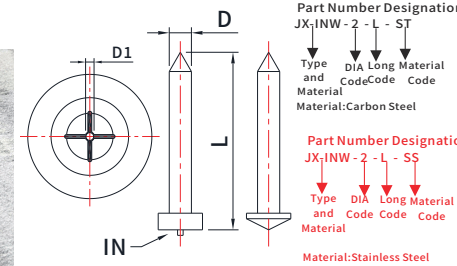
Part Number Designation  
JX-ISO13918- 3- ST  
Material:Carbon Steel

Material:Carbon Steel,Aluminum,  
Stainless,Brass

Unit:mm

Size	P/N		d			L		dk			dp			z		k	
	Carbon Steel	Stainless Steel	nom.	max.	min.	nom.	max.	nom.	max.	min.	nom.	max.	min.	nom.	max.		
3	JX-ISO13918-3-L-ST	JX-ISO13918-3-L-SS	3	3.1	2.9	8	8.6	4.5	4.7	4.3	0.6	0.68	0.52	0.55	0.6	0.5	0.7-1.4
4	JX-ISO13918-4-L-ST	JX-ISO13918-4-L-SS	4	4.1	3.9	8	8.6	5.5	5.7	5.3	0.65	0.73	0.57	0.55	0.6	0.5	0.7-1.4
5	JX-ISO13918-5-L-ST	JX-ISO13918-5-L-SS	5	5.1	4.9	12	12.6	6.5	6.7	6.3	0.75	0.83	0.67	0.8	0.85	0.75	0.7-1.4
6	JX-ISO13918-6-L-ST	JX-ISO13918-6-L-SS	6	6.1	5.9	12	12.6	7.5	7.7	7.3	0.75	0.83	0.83	0.8	0.85	0.75	0.7-1.4
7.1	JX-ISO13918-7.1-L-ST	JX-ISO13918-7.1-L-SS	7.1	7.2	7	15	15.6	9	9.2	8.8	0.75	0.83	0.83	0.85	0.9	0.8	0.8-1.4

## Insulation nail tupe IN and IN-K with clip



Part Number Designation  
JX-INW- 2 - L - ST  
Material:Carbon Steel

Part Number Designation  
JX-INW- 2 - L - SS  
Material:Stainless Steel

Description: Isolation nail  
Material:Carbon Steel,  
Stainless Steel  
Versior withignition tip type IN or conical tip type IN-K (type IN-K only for galvanized sheet metals)

Size	P/N		D±0.05	D1±0.05	L±1
	Carbon Steel	Stainless Steel			
Φ2	JX-INW-Φ2-L-ST	JX-INW-Φ2-L-SS	Φ2	1.8	20-100
Φ2.6	JX-INW-Φ2.6-L-ST	JX-INW-Φ2.6-L-SS	Φ2.6	2.4	30-100
Φ3	JX-INW-Φ3-L-ST	JX-INW-Φ3-L-SS	Φ3	2.8	20-150

Unit:mm